

ERR alpha Antibody
Rabbit mAb
Catalog # AP90620**Specification**

ERR alpha Antibody - Product Information

Application	WB, FC, IP
Primary Accession	P11474
Reactivity	Rat
Clonality	Monoclonal
Other Names	
ESRRA; ERRa; ERR1; HERR1; NR3B1; Steroid hormone receptor ERR1; ERR-alpha; ERRalpha; ESRL1; Estrogen receptor-like 1; Estrogen-related receptor alpha;	
Isotype	Rabbit IgG
Host	Rabbit
Calculated MW	45510 Da

ERR alpha Antibody - Additional Information

Dilution	WB~~1:1000 FC~~1:10~50 IP~~N/A
Purification	Affinity-chromatography
Immunogen	A synthesized peptide derived from human ERR alpha
Description	Estrogen-related receptor alpha (ERRα/NR3B1) is an orphan nuclear receptor that controls transcription of genes involved in fatty acid oxidation, glucose metabolism, and mitochondrial biogenesis. The receptor protein contains a non-conserved amino terminal domain (NTD), a central zinc finger DNA binding domain, and a ligand-binding domain. The carboxy-terminal AF2 helix motif of ERRα contains binding sites for nuclear receptor coactivators PGC-1α and PGC-1β. Research studies demonstrate that ERRα transcriptional activity is regulated through phosphorylation and sumoylation within the NTD.
Storage Condition and Buffer	Rabbit IgG in phosphate buffered saline , pH 7.4, 150mM NaCl, 0.02% sodium azide and 50% glycerol. Store at +4°C short term. Store at -20°C long term. Avoid freeze / thaw cycle.

ERR alpha Antibody - Protein Information

Name ESRRA

Synonyms ERR1, ESRL1, NR3B1

Function

Binds to an ERR-alpha response element (ERRE) containing a single consensus half-site, 5'-TNAAGGTCA-3'. Can bind to the medium- chain acyl coenzyme A dehydrogenase (MCAD) response element NRRE-1 and may act as an important regulator of MCAD promoter. Binds to the C1 region of the lactoferrin gene promoter. Requires dimerization and the coactivator, PGC-1A, for full activity. The ERRalpha/PGC1alpha complex is a regulator of energy metabolism. Induces the expression of PERM1 in the skeletal muscle.

Cellular Location

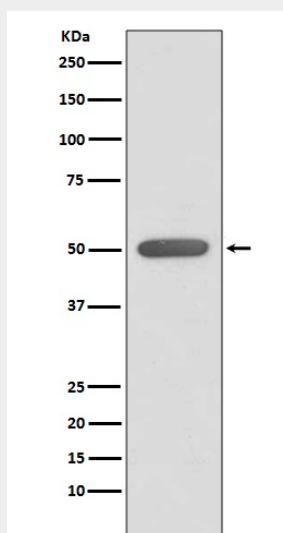
Nucleus {ECO:0000255|PROSITE-ProRule:PRU00407, ECO:0000269|PubMed:18063693, ECO:0000269|PubMed:21190936}. Cytoplasm. Note=Co-localizes to the cytoplasm only in presence of MAPK15.

ERR alpha Antibody - Protocols

Provided below are standard protocols that you may find useful for product applications.

- [Western Blot](#)
- [Blocking Peptides](#)
- [Dot Blot](#)
- [Immunohistochemistry](#)
- [Immunofluorescence](#)
- [Immunoprecipitation](#)
- [Flow Cytometry](#)
- [Cell Culture](#)

ERR alpha Antibody - Images



Western blot analysis of ERR alpha expression in HeLa cell lysate.